



A Cancer Causing Dust Storm?

Fernley Residents!

Imagine this dust storm coming toward your house, filled with cancer-causing mined materials. If you live in south-west Fernley, or have children that will be attending Fernley High School during the next **25 years**, this could literally be what you see every day. This will be a reality starting in the summer of 2009 if we do not take action NOW!

This is Happening!

On February 11th, 2009, the Fernley Planning Commission recommended the City Council approve a Special Use Permit allowing Nevada Cement to conduct heavy industrial surface mining operations in your neighborhood for the next **25 years**.

What is the mine?

The mine is proposed by Nevada Cement to acquire 100,000 tons per year of pozzolan deposits they will use in their manufacture of Portland Cement. Raw pozzolan is a cement additive used to strengthen concrete. It is primarily vitreous siliceous material but also contains a significant amount of crystalline silica. Crystalline Silica is classified by the International Agency for Research of Cancer (IARC) as a Group 1 human carcinogen and has been classified by the National Toxicology Program (NTP) as a substance which can be reasonably anticipated to cause cancer.

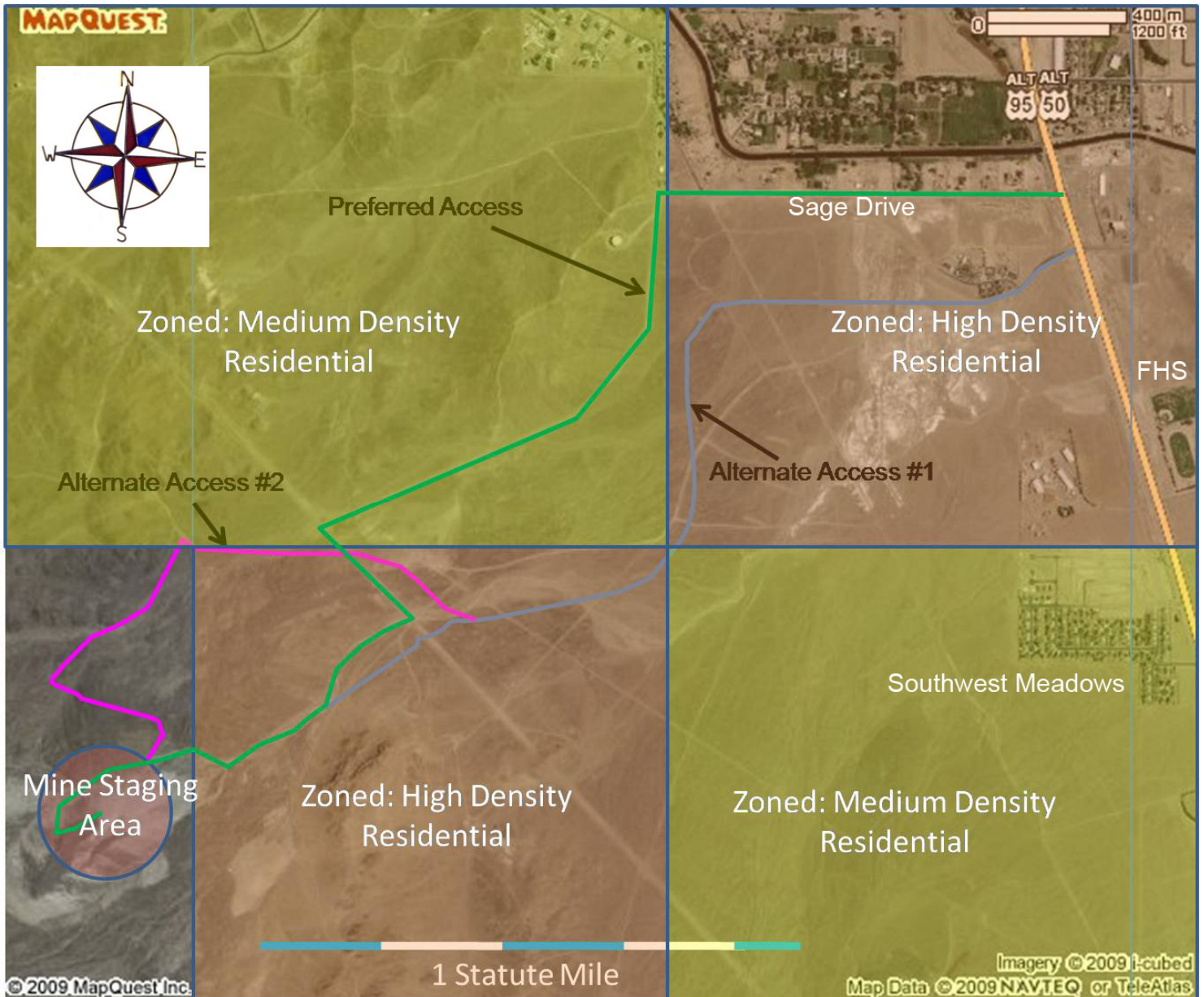
Why Here?

The proposed mine site needs no rezoning because it is technically in a 'rural' area. **But, look at the map on back of this flyer.** You will see the proposed mine site is immediately adjacent to a zoned high density residential area. According to Nevada Cement representatives, the deposit was found by an employee while walking their dog. Nevada Cement can find other deposit sites that don't create negative impacts to our community. We are not against Nevada Cement. We recognize their significant contributions to our community. We just want them to look a little bit more and find a deposit not located in current and proposed residential areas. **WE CAN HELP THEM FIND AN ALTERNATE SOURCE FOR RAW POZZOLAN!**

No Environmental Study or Assessment?

According to the BLM, no Environmental Impact Study or assessment has been conducted. Crystalline silica occurs naturally in pozzolan deposits and is a known carcinogen that also causes silicosis (a scarring of the lungs). Prevailing winds will carry fugitive dust directly over Southwest Meadows, Fernley High School and other nearby residential areas.

See <http://pozzolanmine.weebly.com> for more information and stay informed.



Why Oppose the Mustache Pozzolan Mine?

- Negative Environmental Impacts
- Negative Health Impacts
- Negative Quality of Life Impacts
- Negative Fiscal Impacts
- Negative Community Impacts

Call Your City Council members and tell them how you feel!

Ward #1 Kelly Malloy	775-784-9852
Ward #2 Don Parsons	775-575-4466
Ward #3 Monte Martin	775-575-2270
Ward #4 Curt Chaffin	775-784-9855
Ward #5 Cal Eilrich	775-784-9856
Mayor Todd Cutler	775-980-7288

The City Council will be voting on this Special Use Permit on March 18th, 2009. DO NOT wait until that meeting to take action. The decision will be made in the next few weeks, not at the meeting. **All formal opposition to this mine MUST be in writing.** Please mail your elected representatives at 595 Silver Lace Blvd., Fernley, NV 89408. Tell them to disapprove this request and stop this mine!

Go to the Nevada Cement open house at City Hall and ask them anything you want about the project: March 7th, 10:00 AM & March 12th 6:30 PM.

See <http://pozzolanmine.weebly.com> for more information and stay informed.