



A Cancer Causing Dust Storm?

Fernley Residents! Imagine this dust storm coming toward your house, filled with possible carcinogens, AKA cancer-causing, and other mined materials. This is a reality in the summer of 2009 if we do not take action. And if you live downwind, this could literally be what you see. **Look at the map on back of this flyer.**

This is Happening!

On February 11th, 2009, the Fernley Planning Commission just recommended the City Council approve a Special Use Permit for Nevada Cement to begin mining near your neighborhood for the next 25 years.

What is the mine?

The mine is proposed by Nevada Cement to acquire 100 tons per year of pozzolan deposits they will use in their manufacture of Portland Cement and also for a new product. Pozzolan is a replacement for fly-ash in concrete and is used to strengthen concrete.

Pozzolan is primarily vitreous siliceous material, meaning non-cancer causing. However, there is also crystalline silica in pozzolan. Crystalline silica is listed as a carcinogen and causes silicosis.

Why Here?

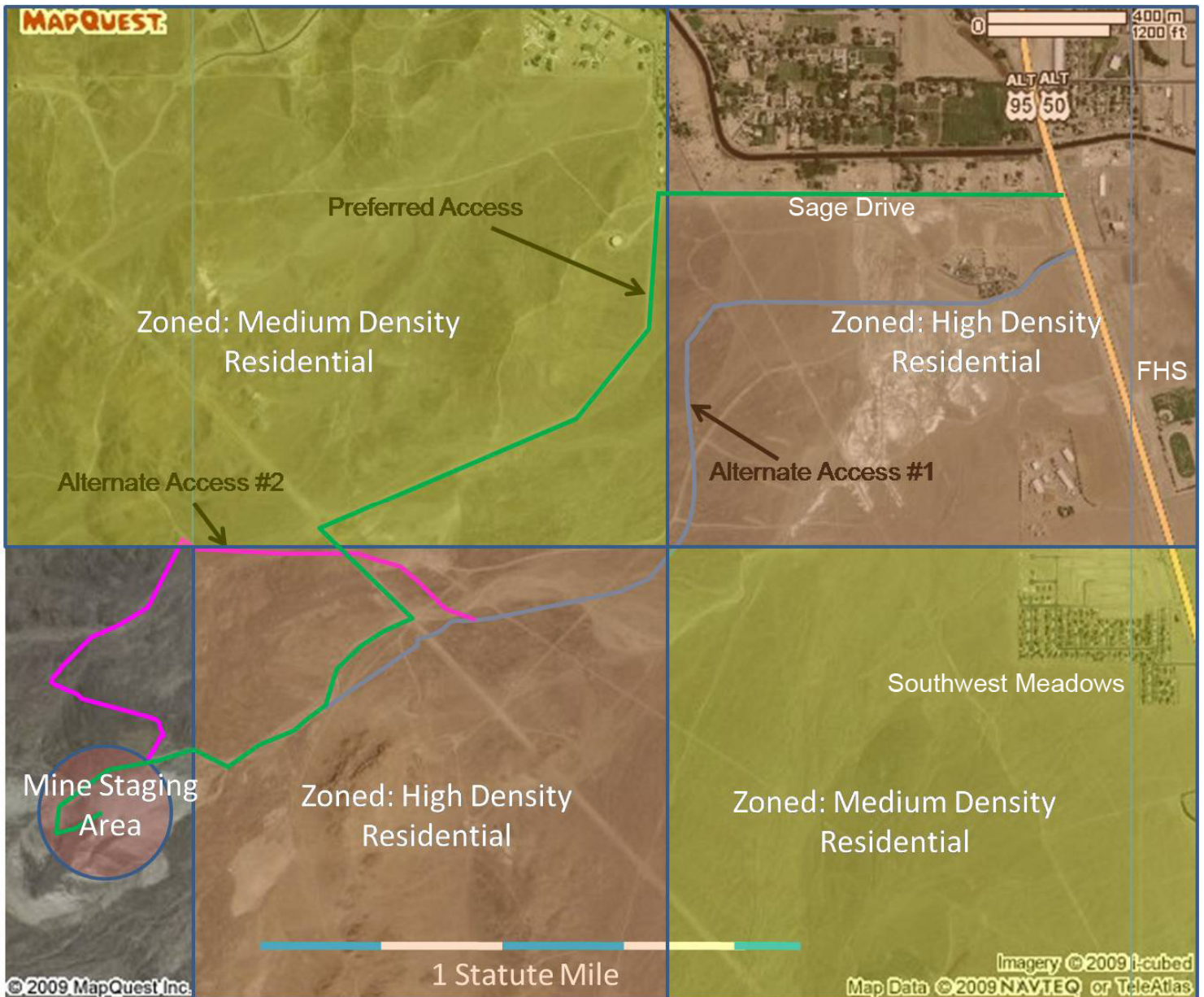
According to the Nevada Cement representative, the deposit was found while an employee was walking their dog. Perhaps Nevada Cement could look around just a little bit more and find a deposit not so close to current and proposed residential areas.

The proposed mine site needs no rezoning because it is in a 'rural' area. If you [look at the map](#) you will see the mine will be immediately adjacent to a high density residential area.

Environmental Study or Assessment

According to the BLM, no Environmental Impact Study or assessment has been conducted. Crystalline silica is a known carcinogen that causes silicosis and occurs naturally in pozzolan deposits. The prevailing winds would carry any fugitive dust directly over Southwest Meadows, Fernley High School and homes nearby.

See <http://pozzolanmine.weebly.com> for more information and stay informed.



Why Oppose the Mustache Pozzolan Mine?

- Negative Environmental Impacts
- Negative Health Impacts
- Negative Quality of Life Impacts
- Negative Fiscal Impacts
- Negative Community Impacts

Ward #2 City Council Member is
Don Parsons
 775-575-4466

Call Don and tell him how you feel!

Nevada Cement can find other deposits without the negative impacts on our community.

The City Council will be voting on this Special Use Permit on March 18th, 2009. DO NOT wait until that meeting to take action. The decision will be made in the next few weeks, not at the meeting. **All opposition to this mine MUST be in writing.** Please mail both Mayor Todd Cutler and Don Parsons at 595 Silver Lace Blvd., Fernley, NV 89408.

Join us to talk to Mayor Todd Cutler about this at Coffee With the Mayor at 8:30 AM, March 21st at Pioneer Crossing.

See <http://pozzolanmine.weebly.com> for more information and stay informed.